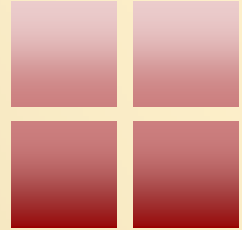
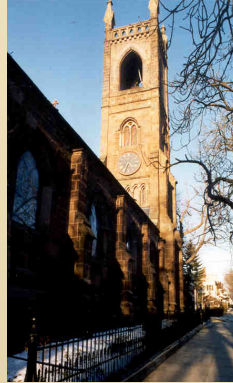


TERRY BYRD EASON DESIGN

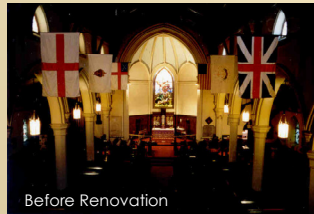
LITURGICAL DESIGN CONSULTATION MASTER PLANNING



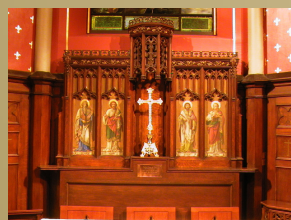
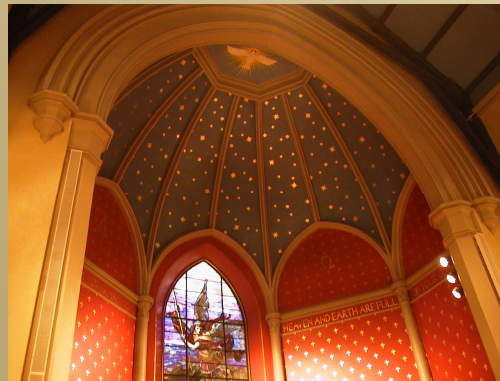
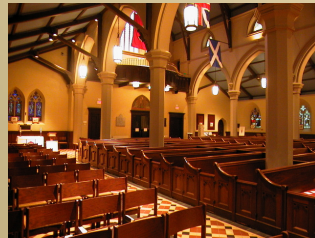
1117 Fearrington Post
Pittsboro, NC 27312

Phone: (919) 968-0445

www.terrybyrdeasondesign.com



Before Renovation



ST. MICHAEL'S EPISCOPAL CHURCH

Bristol, Rhode Island

Completed 2001

This project involved the total renovation of the interior of the historic Victorian gothic church in downtown Bristol, RI. The new floors in the nave was designed using polychrome tiles from England and the chancel floor is constructed from a variety of colored marbles. The decorative painting scheme highlights the Tiffany window in the chancel and includes a diaper pattern of gold leaf crosses on the red chancel walls and gold leaf stars on the blue vaulted ceilings. A new lighting system was designed to provide better reading light as well as increase the focus on the liturgical focal points of altar table, pulpit, and font. The pulpit was moved forward into the nave and a new circular stair was constructed around an existing column and the chancel was extended to provide accessibility to the communion rail.

Local Architect: Berry / Lykins Architects